

# Library Lockers

Did you know you can request a library locker for the upcoming semester? It's a great way to avoid lugging books back and forth. To do so, visit the library website and under the "For Students" column, click library lockers. From that page you can submit your request form for a locker as well as find the library's policies for the lockers.



# Study Zones

The floors of the library are classified into three different zones. Green zones are collaborative zones and allow for talking. They include the first floor, MRC, TLC, and CTLT. Yellow zones are quiet zones and allow for whispering. They include Basement levels 1 and 2. Red zones are silent study where no talking is allowed. The second floor is the only red zone in the library.



# Laptop Setup

The Help Desk will have a temporary "help desk" in Boatwright, **August 28-31, 5 p.m. - 7:00 p.m.** to set up the university network and public printers on your laptop.

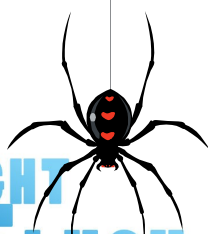


# Accessing Course Reserves

To access Course Reserves, visit the library website. You can find Course Reserves on the main page under the column "For Students." There you can search by class or instructor to find the item.



**BOATWRIGHT  
NEWSFLUSH**



Vol 9, Tissue 1: August 27, 2017

<http://library.richmond.edu/about/boatwright-newsflush.html>